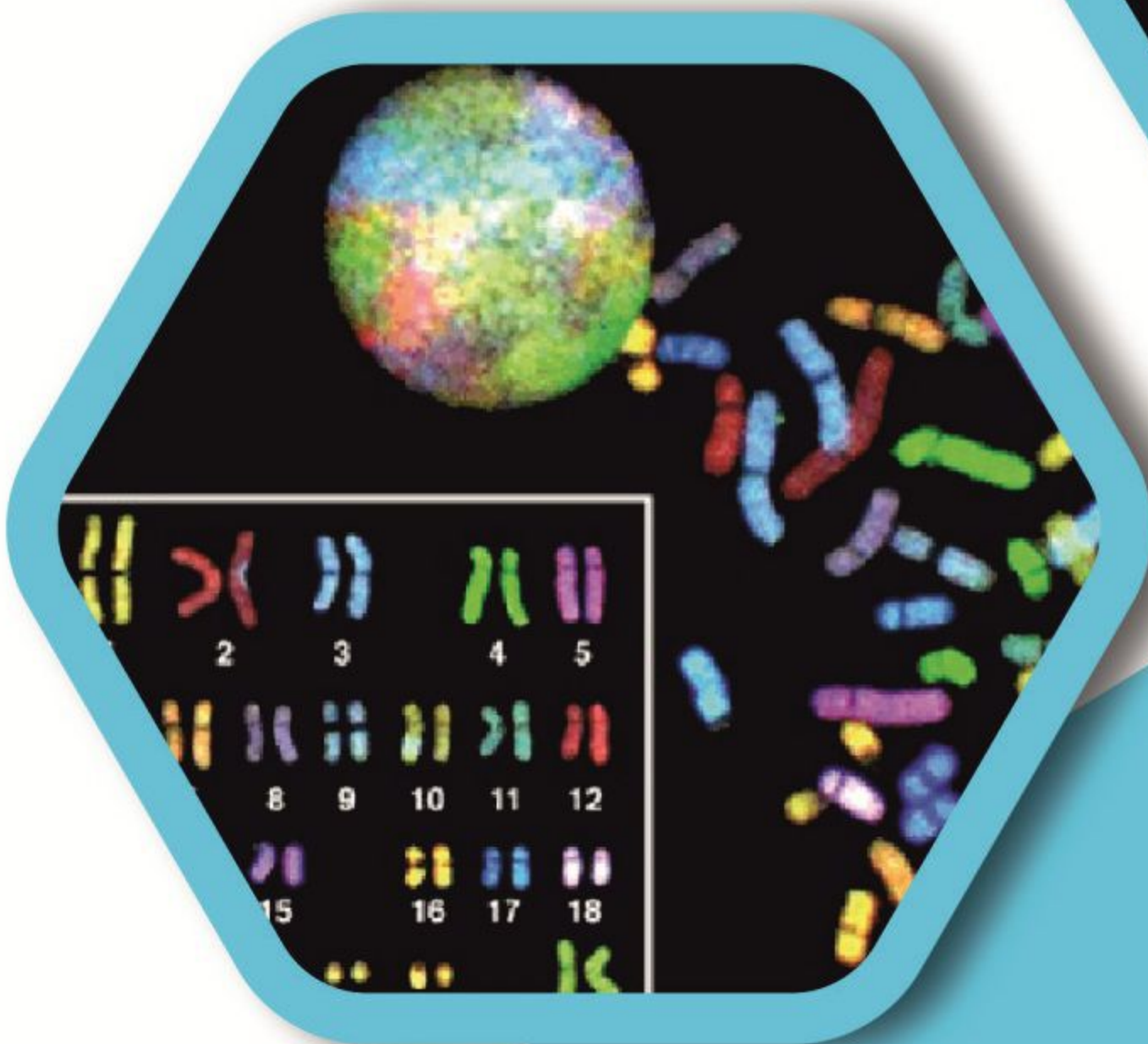
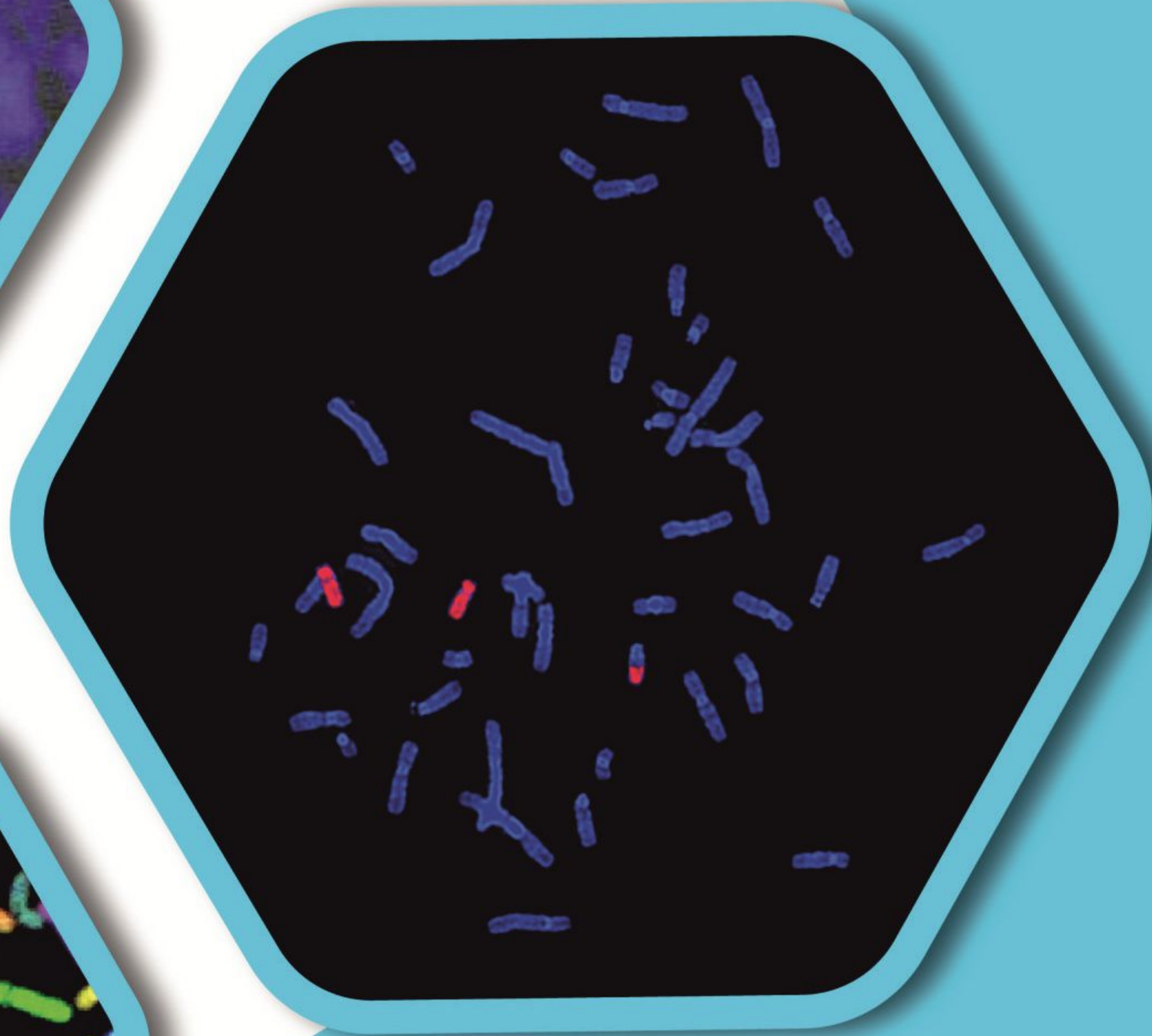
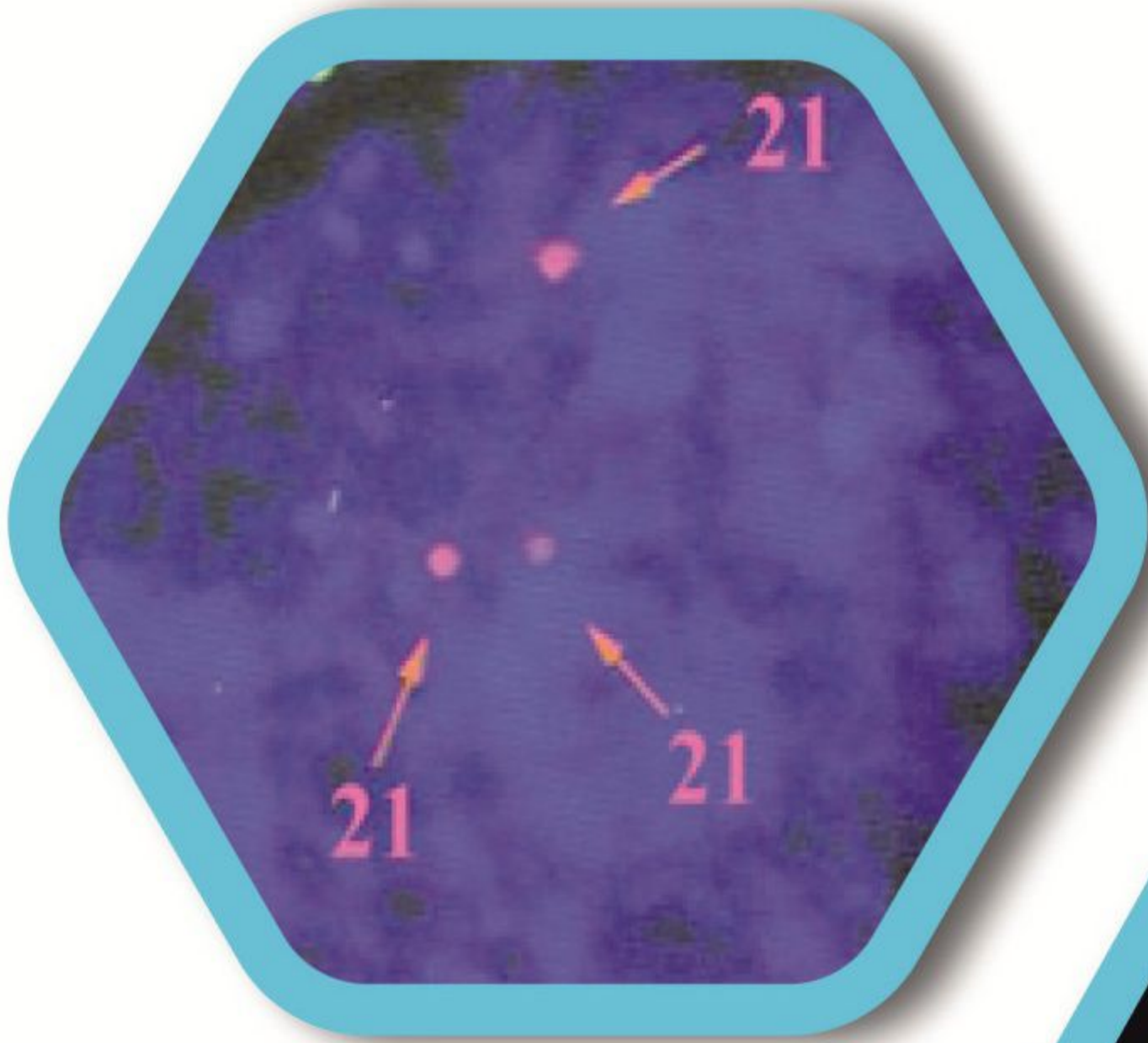
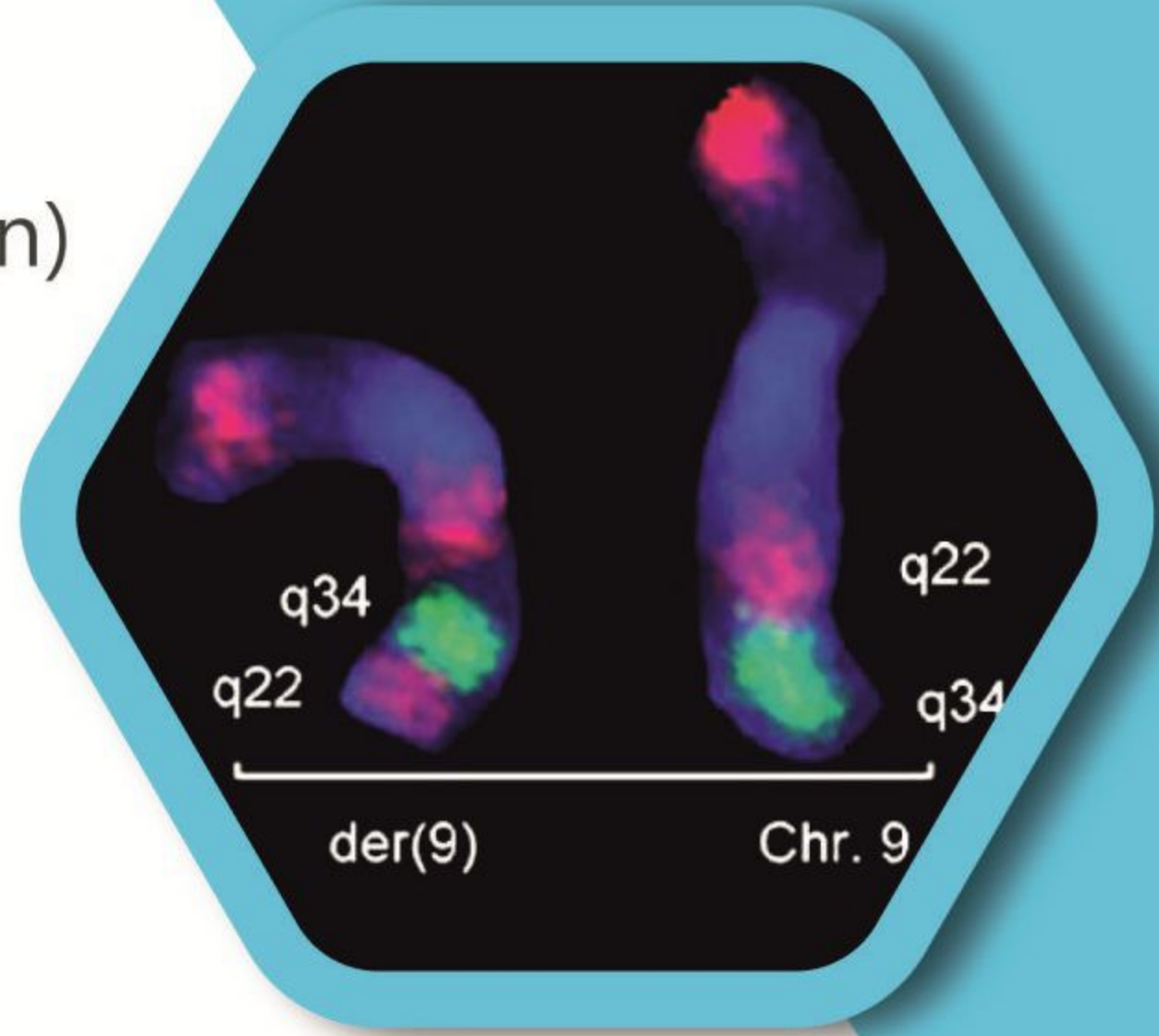


FISH

(Flourescence *In Situ* Hybridization)



Gene  plore

"Exploring the spiral of life"

Fluorescence *In situ* Hybridization (FISH)

- ▶ Rapid and sensitive cytogenetic analysis technique to detect and localize the presence, absence & rearrangements of specific DNA sequences on chromosomes.
- ▶ Small fluorescence labeled probes are used for the detection of the specific abnormalities such as Anueploidy, minor deletion, duplication and translocation.
- ▶ FISH can detect >20 kb probe specific locus in Genome.

FISH can be suggested:

- ▶ To analyze non dividing cells such as Sperms, Ovum, Buccal Epithelial etc, for genetic abnormalities.
- ▶ Cytogenetic analysis from paraffin or formalin fixed tissue in solid tumours.
- ▶ Translocation analysis for BCR/ABL, PML/RARA etc.
- ▶ To analyze locus specific genes and micro deletions syndrome, Angelman syndrome, 22q13 deletion syndrome etc.
- ▶ Chromosomal analysis in prenatal and postnatal disorders.

TEST NAME	SAMPLE	CONTAINER TYPE (VOLUME REQUIRED)	TURN AROUND TIME
Chromosome 13,18,21,X,Y	Bone marrow Blood, Cord blood, Amniotic Fluid, CVS, Abortus material	Heparin Vacutainer 15ml Sterile Screw cap tube	3-4 Days
Del(22q), Del(5q), Del(7q)	Bone Marrow/ peripheral blood	Heparin Vacutainer	3-4 Days
BCR/ABL; PML/RAR;	Bone Marrow/ peripheral blood	Heparin Vacutainer	3-4 Days
ROS1, ALK, Her-2-Neu	Tumour tissue	Paraffin tissue blocks	5-7 Days

*NOTE : DO NOT FREEZE THE SAMPLES, SHOULD BE STORED AND TRANSPORTED AT AMBIENT TEMPERATURE.



GeneXplore Diagnostics and Research Centre Pvt. Ltd.

B-301 & 302, Tulip Corpus, Opp V. S. Hospital, Above Pakwan Dinning Hall, Ashram Road, Ellis Bridge Ahmedabad- 380 006, Gujarat, INDIA

✉ info@genexplore.co.in 🌐 www.genexplore.co.in ☎ 079-26584044;55